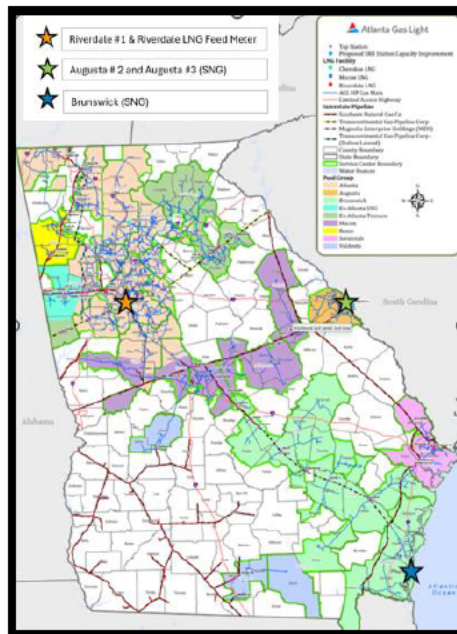


AGL's 2025-2034 i-CDP – Amended Minimum Filing Requirements – Proposed Station Additions

I. Introduction

The Georgia Public Service Commission (“Commission”) issued an Order¹ on February 23, 2021, approving the Stipulation between the Commission Staff and Atlanta Gas Light Company (“AGL”) (the “Governance Document”), which requires AGL to submit as part of its i-CDP filing Minimum Filing Requirements (“MFRs”) for both System Reinforcement Rider² (the “SRR”) and Georgia Rate Adjustment Mechanism (“GRAM”) capital projects.³ The information included within this document, as well as the attachments referenced below for each MFR, supplement the primary Plan document to ensure that all of the agreed-to MFRs are provided.

The system map below provides the location of the five (5) Tap Station SRR Projects proposed for the 2026 and 2027 Plan period.



II. MFRs for the System Reinforcement Rider Projects

SRR-MFR-1	Listing of the Tap Station system reinforcement projects 2026 and 2027.
------------------	---

Table 1 below shows the list of Tap Station SRR projects proposed for 2026 and 2027 of the Plan period.

Table 1: Proposed Projects List

	Project	Description	Target In Service	Estimated 2026-2027 Costs (SRR)
1	Riverdale #1	Tap Station Upgrade	Dec 2026	
2	Augusta #2	Tap Station Upgrade	Dec 2027	
3	Augusta #3	Tap Station Upgrade	Dec 2026	
4	Riverdale LNG Tap Meter	Tap/Meter Station Upgrade	Dec 2027	
5	Brunswick/Bordertown	Tap Station Upgrade	Nov 2026	

New Station Additions Business Drivers

Southern Natural Gas Company (“SNG”) South System Expansion 4 Project (“SSE4”) and the Transcontinental Gas Pipe Line Corporation (“Transco”) Southeast Supply Enhancement Project (“SEP”) will provide additional natural gas capacity that can benefit AGL’s distribution system. AGL must expand its facilities to be able to receive and redeliver 275,000 Dth/day of additional Transco and SNG capacity into its system by 2027/2028 to continue to adequately serve existing customers and support new growth. This additional capacity was approved by the Commission as a part of the Company’s most recent Capacity Supply Plan and includes:

- 75,000 Dth per day of new capacity off Transco pipelines (expected by Fall 2027); and
- 200,000 Dth per day of new capacity off SNG pipelines (Contracted by Fall 2028 but ~25% of this new supply is currently expected earlier).

Since tap station construction generally takes two years to design, coordinate with any necessary supplier side station work required, procure long-lead materials, and construct/commission the station, these projects must move forward as planned to ensure that the new contracted capacity is able to be fully utilized. This additional capacity must be strategically added into the system at key locations to:

- Ensure that the system has adequate take-away capacity to accept the new supplies;

- Introduce the new supplies at locations as needed to address current system issues and expected growth; and
- Align with current agreements.

SRR-MFR-3	<p>For each project or category of projects identified for the planning period, AGL will provide the following:</p> <ul style="list-style-type: none">a) Description of the projects,b) A statement of the system reinforcement or pressure improvement issues being addressed,c) The counties and locations of the projects,d) Years during which the project planning and construction are planned,e) An overview system map reflecting the proposed improvements,f) “Before and after” model illustrations reflecting compliance with minimum system operating pressures under design day conditions, andg) Projected cost.
------------------	--

NOTE: SRR-MFR-3(f) requires “before and after” model illustrations (often referred to as “red to green” maps) that are specifically related to large system reinforcement pipeline projects but are not applicable to the supply station projects.

1. Riverdale #1 Tap Station Upgrade**Project Specifics:**

- Location: Riverdale, GA / Clayton County
- Upgrade of Tap Station fed by SNG to increase capacity into the pipeline system as well as address MAOP reconfirmation and obsolete equipment.
- Station contains ten (10) Individual “Mini” Tap Stations.
- Feeds 5 major AGL pipelines.
- 1,200 PSIG MAOP.
- Estimated Total Cost: [REDACTED]

Work Type	Year
Planning	2025
Construction	2026
Gas-On	2026

System Reinforcement or Pressure Improvement Issues Being Addressed:

- The station capacity must be increased from 16,000 MCFH to 30,000 MCFH due to SSE4 additional capacity, which in turn requires increasing certain existing piping and equipment to accommodate the increased capacity needs. For example, the inlet piping to the station will be increased from 20” to 24” to accommodate the additional capacity.
- As first referenced in AGL’s 2025-2034 Integrated Capacity and Delivery Plan – TRADE SECRET – Section 6.4.4., Page 32, AGL has contracted with SNG and Transco to provide additional system capacity to support growth.
- Please see overview system map in the Introduction section (Page 1 of Amended MFRs) reflecting the location of this project.

2. Augusta #2 Tap Station Upgrade

Project Specifics:

- Location: Augusta, GA / Richmond County.
- Upgrade of the Augusta #2 Tap Station fed by SNG to increase capacity in the pipeline system as well as address MAOP reconfirmation and obsolete equipment.
- The Augusta #2 and Augusta #3 stations combined will provide a key takeaway point for the additional SNG gas to serve growth and industry at the eastern end of AGL's system.
- Estimated Total Cost: [REDACTED]

Work Type	Year
Planning	2026
Construction	2027
Gas-On	2027

System Reinforcement or Pressure Improvement Issues Being Addressed:

- The station capacity must be increased from 647 MCFH to 1,300 MCFH due to SSE4 additional capacity, which in turn requires increasing certain existing piping and equipment to accommodate the increased capacity needs. For example, the header piping will be increased from 6" and 8" to 12" and meter run piping is being increased from 3" and 4" to 4" and 6" to accommodate the additional capacity.
- As first referenced in AGL's 2025-2034 Integrated Capacity and Delivery Plan – TRADE SECRET – Section 6.4.4., Page 32, AGL has contracted with SNG and Transco to provide additional system capacity to support growth.
- Please see overview system map in the Introduction section (Page 1 of Amended MFRs) reflecting the location of this project.

3. Augusta #3 Tap Station Upgrade

Project Specifics:

- Location: Augusta, GA / Richmond County.
- Upgrade of the Augusta #3 Tap Station fed by SNG to increase capacity into the pipeline system as well as address MAOP reconfirmation and obsolete equipment.
- The Augusta #2 and Augusta #3 stations combined will provide a key takeaway point for the additional SNG gas to serve growth and industry at the eastern end of AGL's system.
- Estimated Total Cost: [REDACTED]

Work Type	Year
Planning	2025
Construction	2026
Gas-On	2026

System Reinforcement or Pressure Improvement Issues Being Addressed:

- The station capacity must be increased from 1,400 MCFH to 2,500 MCFH due to SSE4 additional capacity, which in turn requires increasing certain existing piping and equipment to accommodate the increased capacity needs. For example, the header piping will be increased from 8" and 10" to 12" to accommodate the additional capacity.
- As first referenced in AGL's 2025-2034 Integrated Capacity and Delivery Plan – TRADE SECRET – Section 6.4.4., Page 32, AGL has contracted with SNG and Transco to provide additional system capacity to support growth.
- Please see overview system map in the Introduction section (Page 1 of Amended MFRs) reflecting the location of this project.

4. Riverdale LNG Tap Meter Upgrade

Project Specifics:

- Location: Riverdale, GA / Clayton County.
- Upgrade Replacement of the existing connection and metering between SNG supply and the Riverdale LNG plant plus a new connection and meter set between the Transco supply and the Riverdale LNG plant.
- Estimated Total Cost: [REDACTED]

Work Type	Year
Planning	2026
Construction	2027
Gas-On	2027

System Reinforcement or Pressure Improvement Issues Being Addressed:

- Due to the Transco SEP and SNG SSE4 projects, it will provide flexibility to the Riverdale LNG Plant while also allowing for either additional Transco or SNG capacity to feed into the pipeline system.
- As stated in Pre-filed Direct Testimony of Gregory Becker – Section 6.7.7., Page 11 - Lines 11-15, “Having a closed loop refrigerant capability also allows AGL to liquify gas from either SNG or Transco delivery to the system, assuming the Riverdale Plant can be configured in a way to allow it.” This work provides this necessary configuration.
- Please see overview system map in the Introduction section (Page 1 of Amended MFRs) reflecting the location of this project.

5. Brunswick-Border Town Tap Station Upgrade**Project Specifics:**

- Location: Brunswick, GA / Glynn County.
- Upgrade of the Brunswick-Border Town Tap Station will serve the needs of new and existing customers, and provide greater operational flexibility for AGL's existing capacity rights on SNG and Magnolia Pipeline System
- Estimated Total Cost: [REDACTED]

Work Type	Year
Planning	2025
Construction	2026
Gas-On	2026

System Reinforcement or Pressure Improvement Issues Being Addressed:

- The station design capacity needs to be increased from 2,155 MCFH to 3,000 MCFH to meet expected customer needs, which in turn requires increasing certain existing piping and equipment to accommodate the increased capacity needs. For example, the header piping will be increased from 8" and 12" to 20" to accommodate the additional capacity.
- Please see overview system map in the Introduction section (Page 1 of Amended MFRs) reflecting the location of this project.